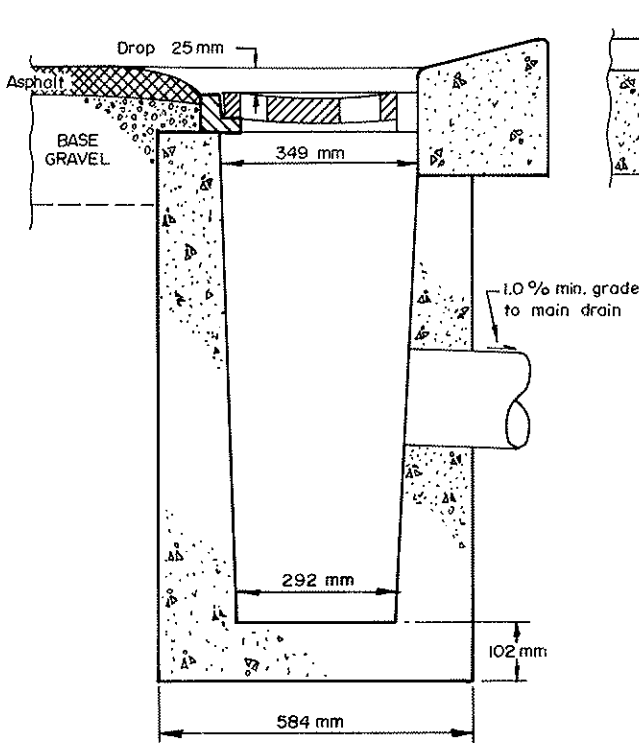
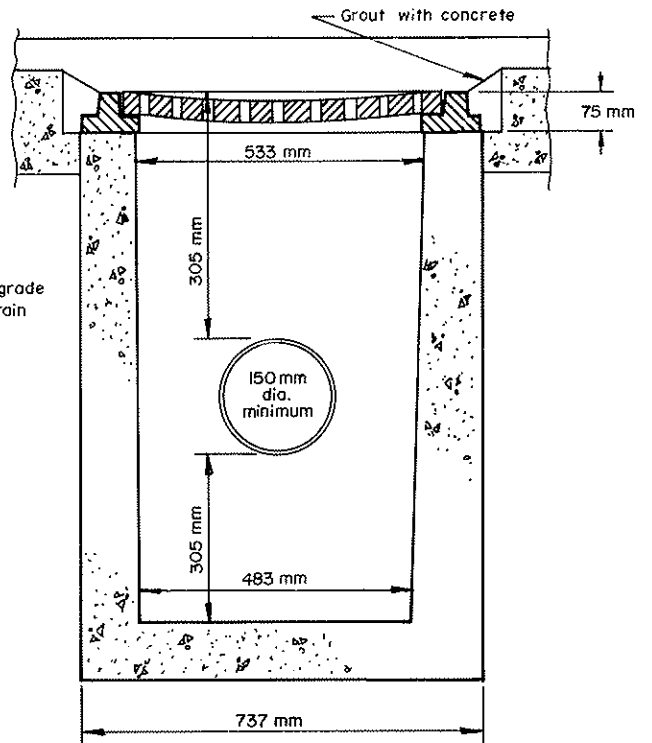


PLAN



SECTION A-A



SECTION B-B

NOTES:

1. For details of grate and frame see std. dwg. no. 313
2. Trenches under travelled portion of road to be backfilled with gravel and compacted (75 mm max.).
3. For details of curbs see std. dwg. no. 508
- ④ Right or left hand grate pattern to be consistent with direction of drainage flow.
5. Concrete to be 20 MPa at 28 days.



MUNICIPALITY OF CENTRAL SAANICH

TITLE:		CATCHBASIN		STD. DWG. No.
				311
Approved;	Date; JULY 1986	Scale; N.T.S.	Rev.	