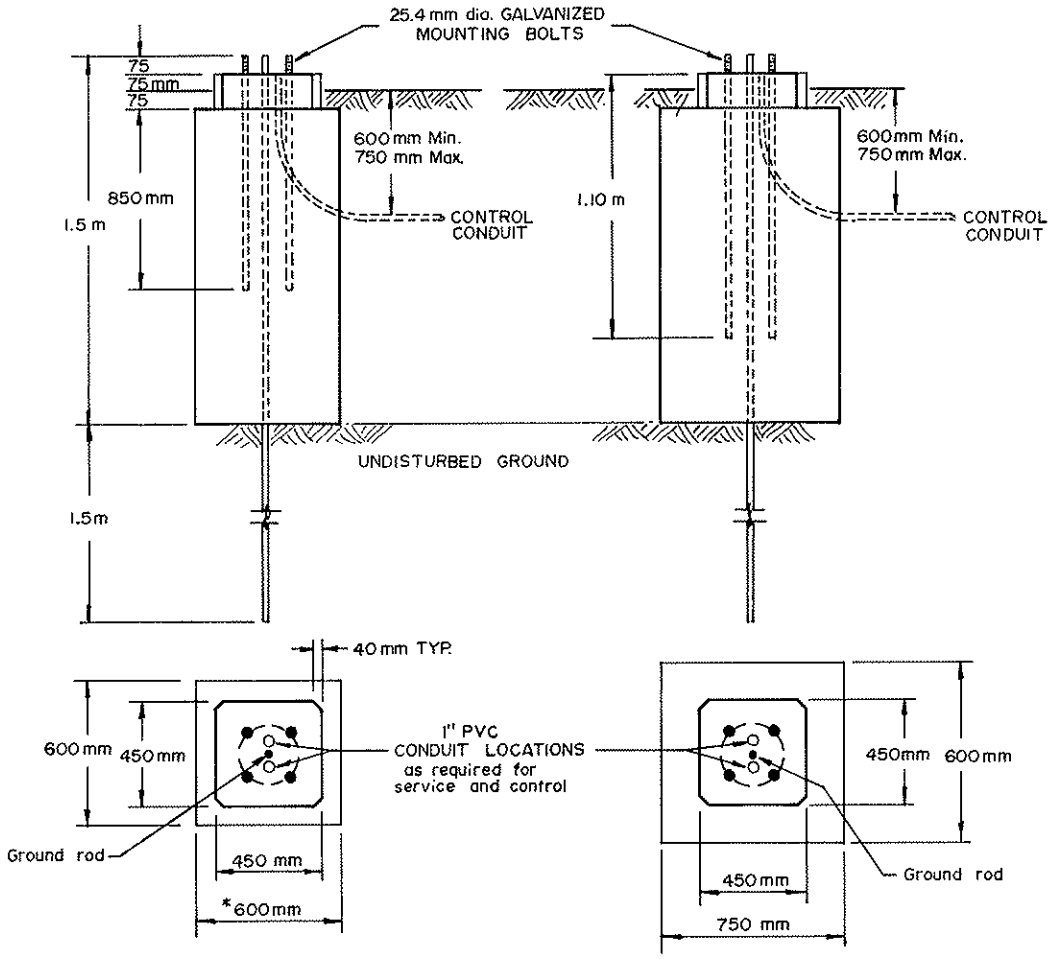


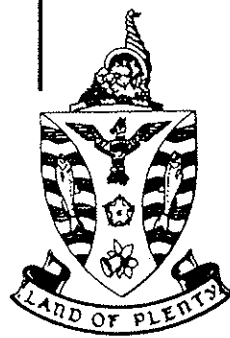
STREET LIGHTING STANDARD
BASE

TRAFFIC SIGNAL STANDARD
BASE



NOTES :

1. IN SOFT GROUND FLARE THE BASE TO SUIT THE CONDITIONS. ON ROCK MIN'M BASE DEPTH TO BE 1 m WITH 25mm dia. DEFORMED IRON RODS SUITABLY SET 600 mm INTO ROCK AND A MIN'M OF 600 mm INTO BASE.
2. TOPS OF BASES TO BE LEVELLED ACCURATELY. BOLT CIRCLE MAY VARY WITH MAKE AND TYPE OF STANDARD. BOLTS ARE EQUALLY SPACED.
3. CONCRETE : 25 MPa AT 28 DAYS.
80 mm MAX. SLUMP.
25 mm MAX. AGGREGATE.
- * 4. 750 mm dia. SONATUBE MAY BE USED.



MUNICIPALITY OF CENTRAL SAANICH			
TITLE:	STREET LIGHT & TRAFFIC SIGNAL STANDARD BASES	STD.DWG.No	601
Approved;	Date; SEPT. 1986	Scale; N.T.S.	Rev.